

\$659,900 - 1247 Calahoo Road, Spruce Grove

MLS® #E4436920

\$659,900

5 Bedroom, 3.50 Bathroom, 2,409 sqft

Single Family on 0.00 Acres

Aspen Glen, Spruce Grove, AB

Welcome home to this F/F 2 Storey that is ideally situated in Jesperdale across from a tranquil pond and backing onto trees & green space with walking trails. Upon entry, you are greeted by a grand entrance with soaring open-to-above ceiling. The main floor is an exceptional open-concept layout featuring a contemporary kitchen with white cabinetry, quartz countertops, a large waterfall island, stainless steel appliances and a walk-through pantry, large eating nook, living room with Electric F/P and den. Upstairs includes two bedrooms with a Jack and Jill bathroom, bonus room and laundry. The primary suite has a large vaulted ceiling with a walk in closet and spa like 5 piece ensuite. The fully finished basement adds even more living space with two additional bedrooms, a gym and a stylish 3-piece bathroom. This home was designed for both comfort and entertaining. Right next to the Links Golf course and Walking distance to schools, parks and shopping. Easy access to the city with major roadways close by

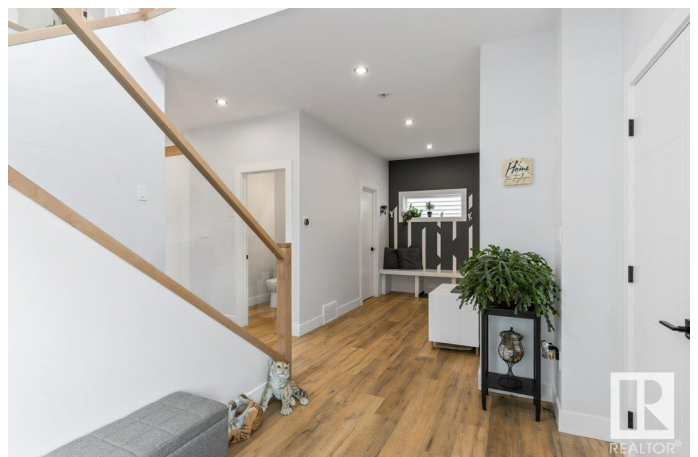
Built in 2022

Essential Information

MLS® # E4436920

Price \$659,900

Bedrooms 5



Bathrooms	3.50
Full Baths	3
Half Baths	1
Square Footage	2,409
Acres	0.00
Year Built	2022
Type	Single Family
Sub-Type	Detached Single Family
Style	2 Storey
Status	Active

Community Information

Address	1247 Calahoo Road
Area	Spruce Grove
Subdivision	Aspen Glen
City	Spruce Grove
County	ALBERTA
Province	AB
Postal Code	T7X 4R5

Amenities

Amenities	Air Conditioner, Deck, Vaulted Ceiling, Natural Gas BBQ Hookup
Parking	Double Garage Attached

Interior

Interior Features	ensuite bathroom
Appliances	Dishwasher-Built-In, Dryer, Garage Control, Garage Opener, Hood Fan, Oven-Built-In, Oven-Microwave, Refrigerator, Stove-Gas, Washer
Heating	Forced Air-2, Natural Gas
Fireplace	Yes
Fireplaces	Insert
Stories	3
Has Basement	Yes
Basement	Full, Finished

Exterior

Exterior	Wood, Stone, Vinyl
Exterior Features	Backs Onto Park/Trees, Fenced, Golf Nearby, Landscaped, Park/Reserve, Playground Nearby, Schools, Shopping Nearby

Roof	Asphalt Shingles
Construction	Wood, Stone, Vinyl
Foundation	Concrete Perimeter

Additional Information

Date Listed	May 16th, 2025
Days on Market	3
Zoning	Zone 91

DATA IS DEEMED RELIABLE BUT IS NOT GUARANTEED ACCURATE BY THE REALTORS® ASSOCIATION OF EDMONTON. COPYRIGHT 2025 BY THE REALTORS® ASSOCIATION OF EDMONTON. ALL RIGHTS RESERVED.Trademarks are owned or controlled by the Canadian Real Estate Association (CREA) and identify real estate professionals who are members of CREA (REALTOR®, REALTORS®) and/or the quality of services they provide (MLS®, Multiple Listing Service®)

Listing information last updated on May 19th, 2025 at 3:32pm MDT