

Courtesy Of Thomas Kube Of Black Sheep Realty

\$229,900 - 206 10421 42 Avenue, Edmonton

MLS® #E4436695

\$229,900

2 Bedroom, 2.00 Bathroom, 1,164 sqft

Condo / Townhouse on 0.00 Acres

Rideau Park (Edmonton), Edmonton, AB

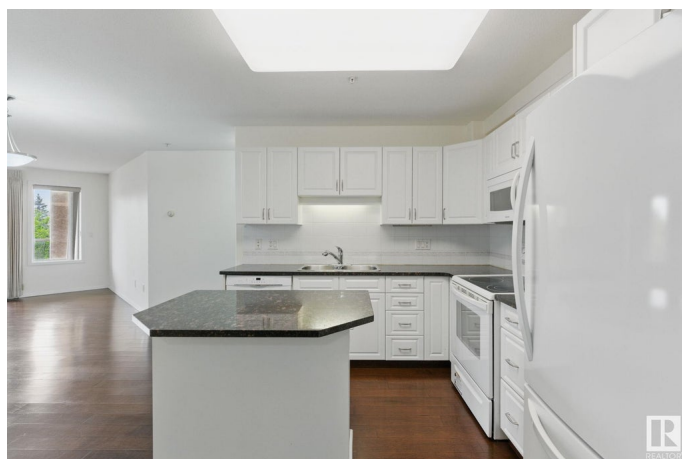
Welcome to the prestigious, spacious 2-bed + den, 2-bath unit offers comfortable adult living (18+) in desirable Rideau Park. Features include a granite kitchen, large bedrooms both with walk-in closets, in-suite laundry, and a balcony with natural gas hookup overlooking a quiet, tree-lined backroad. Impressive amenities: fitness centre, hobby room, recreation room, and a car wash in your heated underground parking (with storage locker). Ideal location near Southgate, Whitemud Dr, transit, shopping & dining.

Built in 1997

Essential Information

MLS® #	E4436695
Price	\$229,900
Bedrooms	2
Bathrooms	2.00
Full Baths	2
Square Footage	1,164
Acres	0.00
Year Built	1997
Type	Condo / Townhouse
Sub-Type	Lowrise Apartment
Style	Single Level Apartment
Status	Active

Community Information



Address	206 10421 42 Avenue
Area	Edmonton
Subdivision	Rideau Park (Edmonton)
City	Edmonton
County	ALBERTA
Province	AB
Postal Code	T6J 7C8

Amenities

Amenities	On Street Parking, Car Wash, Closet Organizers, Detectors Smoke, Exercise Room, No Animal Home, No Smoking Home, Parking-Visitor, Party Room, Secured Parking, Social Rooms, Vinyl Windows, Storage Cage, Natural Gas BBQ Hookup
Parking Spaces	1
Parking	Heated, Underground

Interior

Interior Features	ensuite bathroom
Appliances	Dishwasher-Built-In, Dryer, Oven-Microwave, Refrigerator, Stove-Electric, Washer, Window Coverings
Heating	In Floor Heat System, Natural Gas
# of Stories	3
Stories	1
Has Basement	Yes
Basement	None, No Basement

Exterior

Exterior	Wood, Stucco
Exterior Features	Landscaped, Playground Nearby, Public Transportation, Shopping Nearby, See Remarks
Roof	Asphalt Shingles
Construction	Wood, Stucco
Foundation	Concrete Perimeter

Additional Information

Date Listed	May 15th, 2025
Days on Market	9
Zoning	Zone 16
Condo Fee	\$567

DATA IS DEEMED RELIABLE BUT IS NOT GUARANTEED ACCURATE BY THE REALTORS® ASSOCIATION OF EDMONTON. COPYRIGHT 2025 BY THE REALTORS® ASSOCIATION OF EDMONTON. ALL RIGHTS RESERVED.Trademarks are owned or controlled by the Canadian Real Estate Association (CREA) and identify real estate professionals who are members of CREA (REALTOR®, REALTORS®) and/or the quality of services they provide (MLS®, Multiple Listing Service®)

Listing information last updated on May 23rd, 2025 at 11:17pm MDT