

\$219,900 - 316 6925 199 Street, Edmonton

MLS® #E4425876

\$219,900

2 Bedroom, 2.00 Bathroom, 835 sqft

Condo / Townhouse on 0.00 Acres

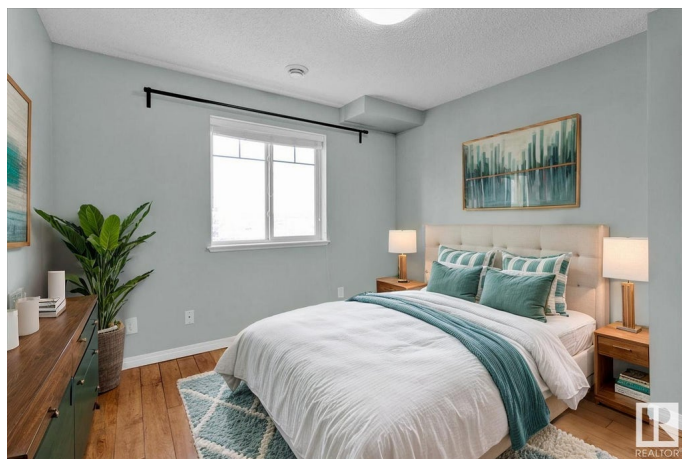
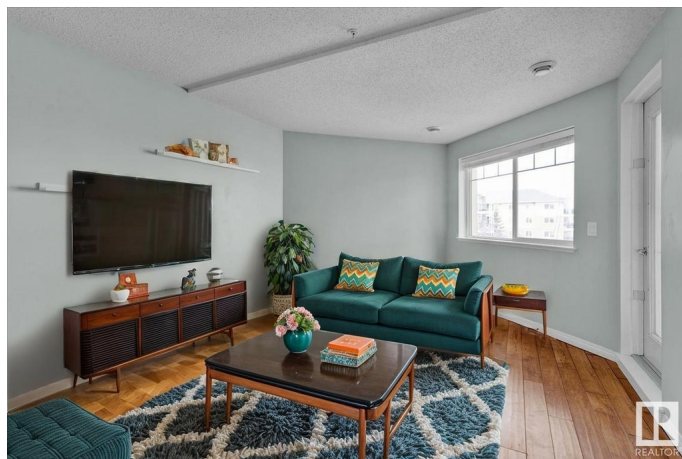
Glastonbury, Edmonton, AB

Welcome Home! ATTENTION! Awesome unit with AC boasting 2 BED 2 BATH 2 PARKING Condo in West Edmonton Glastonbury WOW. PET Friendly! CONCRETE Building promotes Quieter Units with less noise. Which allows you to have no carpet quiet clean living. Terrific location and unit with Covered Balcony. Great condo corporation and building with common areas and condo gym. Plenty of visitor parking. Close to shopping, parks, transit, highway, restaurants, and so much more. Third floor unit. Open floor plan with full kitchen, dining, and living room leading to balcony. In suite laundry! 2 Full Bathrooms and 2 Bedrooms. Both bedrooms have Walk In Closets. Master bedroom has ensuite bathroom. Do not let this terrific value, higher quality, all included unit pass you by!

Built in 2007

Essential Information

MLS® #	E4425876
Price	\$219,900
Bedrooms	2
Bathrooms	2.00
Full Baths	2
Square Footage	835
Acres	0.00
Year Built	2007



Type	Condo / Townhouse
Sub-Type	Lowrise Apartment
Style	Single Level Apartment
Status	Active

Community Information

Address	316 6925 199 Street
Area	Edmonton
Subdivision	Glastonbury
City	Edmonton
County	ALBERTA
Province	AB
Postal Code	T5T 3X8

Amenities

Amenities	Parking-Visitor, See Remarks
Parking Spaces	2
Parking	Stall, Underground

Interior

Interior Features	ensuite bathroom
Appliances	Air Conditioning-Central, Dishwasher-Built-In, Dryer, Microwave Hood Fan, Refrigerator, Stove-Electric, Washer
Heating	Heat Pump, Natural Gas
# of Stories	4
Stories	1
Has Basement	Yes
Basement	None, No Basement

Exterior

Exterior	Concrete, See Remarks
Exterior Features	Golf Nearby, Public Transportation, Schools, Shopping Nearby
Roof	Asphalt Shingles
Construction	Concrete, See Remarks
Foundation	Concrete Perimeter

Additional Information

Date Listed	March 14th, 2025
Days on Market	70

Zoning	Zone 58
Condo Fee	\$414

DATA IS DEEMED RELIABLE BUT IS NOT GUARANTEED ACCURATE BY THE REALTORS® ASSOCIATION OF EDMONTON. COPYRIGHT 2025 BY THE REALTORS® ASSOCIATION OF EDMONTON. ALL RIGHTS RESERVED. Trademarks are owned or controlled by the Canadian Real Estate Association (CREA) and identify real estate professionals who are members of CREA (REALTOR®, REALTORS®) and/or the quality of services they provide (MLS®, Multiple Listing Service®)

Listing information last updated on May 23rd, 2025 at 12:33pm MDT